

**Green Organics, LLC**

**Sample: 08TRC009719.P3320**

Strain: 1922611.80.500M

OH 45152  
paulascarcella@me.com  
(614) 339-9128  
Lic. #

Sample Received: 08/26/2019; Report Created: 09/03/2019  
Leaf Inventory/Lot ID: ; Leaf Pre-Transfer Inventory/Lot ID:  
Leaf Batch ID: 1922611.80.500M; Leaf Pre-Transfer Batch ID:  
Leaf Manifest ID:

**500 mg Mint**

Plant, Other, Outdoor  
External Batch ID: 1922611.80.500M



**0.59 mg/g**  
THC Potency

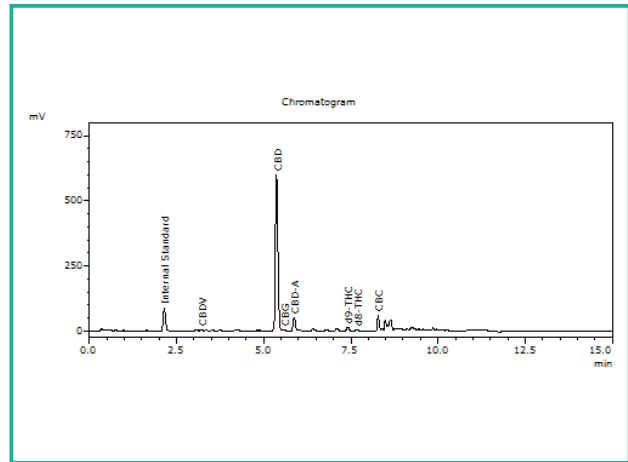
**22.82 mg/g**  
CBD Potency

**23.41 mg/g**  
Total Potency\*

## Cannabinoids

Analyte	Mass mg/g	Mass %
THCa	ND	ND
Δ9-THC	0.59	0.059
CBD	22.00	2.200
CBDa	0.93	0.093
CBN	ND	ND
Δ8-THC	0.14	0.014
THCV	ND	ND
CBDV	0.15	0.015
CBG	0.21	0.021
CBGa	ND	ND
CBC	0.58	0.058
<b>Total</b>	<b>24.60</b>	<b>2.460</b>

## Chromatogram



THC Potency = THCa \* 0.877 + d9-THC; CBD Potency = CBDa \* 0.877 + CBD; LOQ = Limit of Quantitation; Total Potency\* = Total THC + Total CBD. Unless otherwise stated all quality control samples performed within specifications established by the Laboratory.

908 N. Howard St., Suite 101  
Spokane, WA  
(509) 284-7522  
<http://traceanalytics.com/>  
Lic# 0014

*Sara Minier*  
Sara Minier  
Senior Scientist

Confident Cannabis  
All Rights Reserved  
support@confidentcannabis.com  
(866) 506-5866



This product has been tested by Trace Analytics, Inc using valid testing methodologies and a quality system as required by state law. Values reported relate only to the product tested. Trace Analytics, Inc makes no claims as to the efficacy, safety or other risks associated with any detected or non-detected levels of any compounds reported herein. This Certificate shall not be reproduced except in full, without the written approval of Trace Analytics, Inc. Lic# 0014 - Foreign Matter (Visual Inspection) - Moisture (Moisture Analyzer) - Water Activity (Water Activity Meter) - Microbiological (3M Petrifilm/qPCR) - Potency (HPLC-UV) - Residual Solvents (GCMS) - Mycotoxins (ELISA). I-502 sampling is not performed by Trace Analytics.